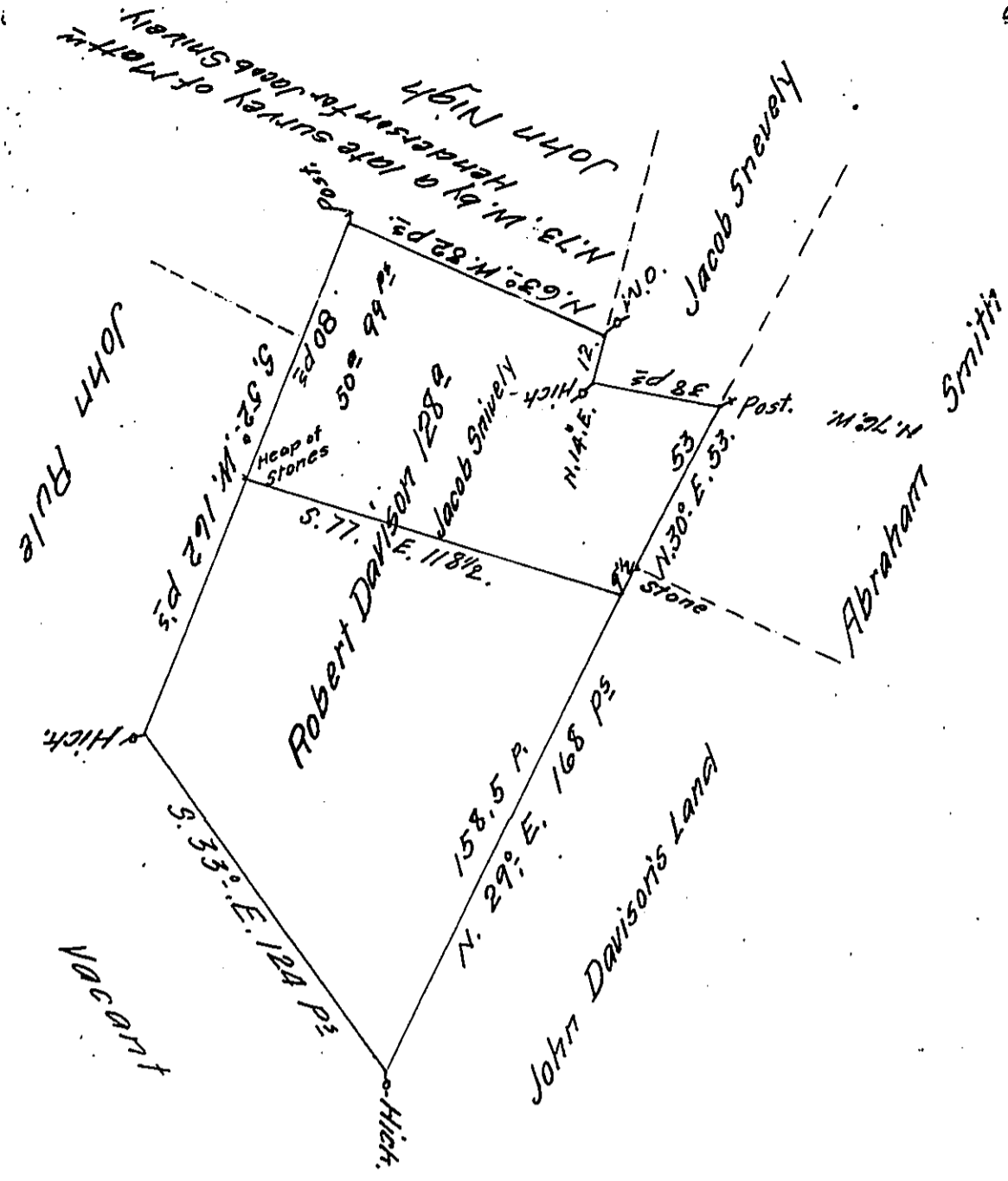


Containing 120⁰ 99⁰⁰ P² owing to ye mistake in ye line
Called N. 63° W. wh^{ch} ought to be 73° W.



A Draught of a Tract of Land Situate in Antrim Town-
ship in the County of Cumberland containing One
hundred & Twenty eight Acres & the the usual Allow-
ance for Roads. Survey'd to Robert Davison on the
1st of Feb^{ry} 1766 in pursuance of the Honorable
the Proprietaries Warr^t Dated at Philadelphia the
16th of May 1763 ✓

Now Franklin Co^y John Armstrong
D.S.

N. B. part of this adjudged to J. Snevely
by B^e Property —

To John Lukens Esq^r }
Surveyor General }

IN TESTIMONY that the above is a copy of the original remaining on file in
the Department of Internal Affairs of Pennsylvania, made
conformably to an Act of Assembly approved the 16th day of
February, 1833, I have hereunto set my Hand and caused
the Seal of said Department to be affixed at Harrisburg,
this second day of February 1912.

Henry Howell
Secretary of Internal Affairs.